

Group Starter Panel **JGP-21**

JRCS CORPORATION

Group Starter Panel *JGP-21*



Group Starter Panel

JGP-21

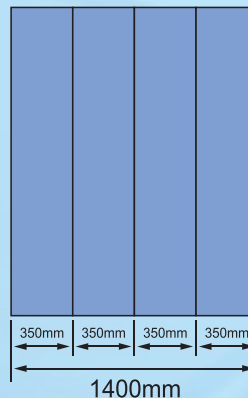
Super Slim Safety

CLOSE UP
1

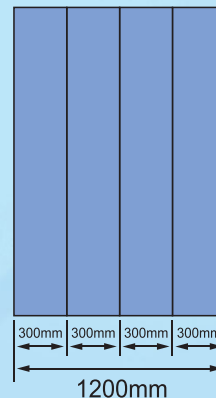
Standard width of each panel is downsized from 350mm to 300mm.

The JGP-21 is the newly designed Group Starter Panel from JRCS which downsized from a standard width of 350mm to 300mm is now the world's smallest for this class. This significant downsizing provides a major space saving where space is limited on vessels. Ease of access for cable connections and wiring remains the same as for a conventional size starter.

Conventional Model



JGP-21



CLOSE UP
2

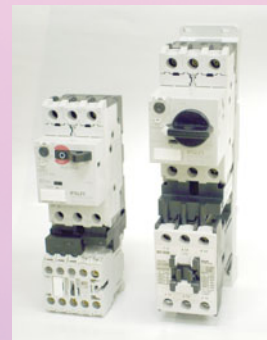
The introduction of the MMS (Manual Motor Starter)

The MMS is a combined unit of breaker, magnetic contactor and thermal relay.

The MMS simplifies the circuits and enhances the breaker's closing capacity, thus greatly increasing reliability.

(Breaking capacity: AC450V 50KA)

In principle, this MMS is suitable for motors up to a capacity of AC450V 37KW.



CLOSE UP 3

A new Starter Control Unit (NSU)

Clear development objectives include unit size reduction and most of all user-friendly feature is adopted. The NSU integrates the motor control and status indications.

Control system integration is also easily achieved through serial communication between ship control & monitoring systems by use of the unique JRCS SCS (Starter Control Station).

NSU-AN7



NSU-RN2



NSU-AN8



UNIT TYPE FUNCTION	NSU-DN2	NSU-LN1	NSU-RN2/3	NSU-RN4	NSU-AN5	NSU-AN6	NSU-AN8	NSU-AN7
SINGLE SPEED	○	○	○		○	○	○	○
2 SPEED				○				
REVERSIBLE			○					
UVP	○	○	○	○	○	○	○	○
UVR (WITH TIMER)		○	○	○	○	○	○	○
MOTOR ABNOR STOP (88 & 5)	○	○	○	○	○	○	○	○
AUTO START & AUTO STOP							○	○
AUTO START & MANU STOP						○		
MANU START & AUTO STOP					○			
AUTO CHANGE OVER								○

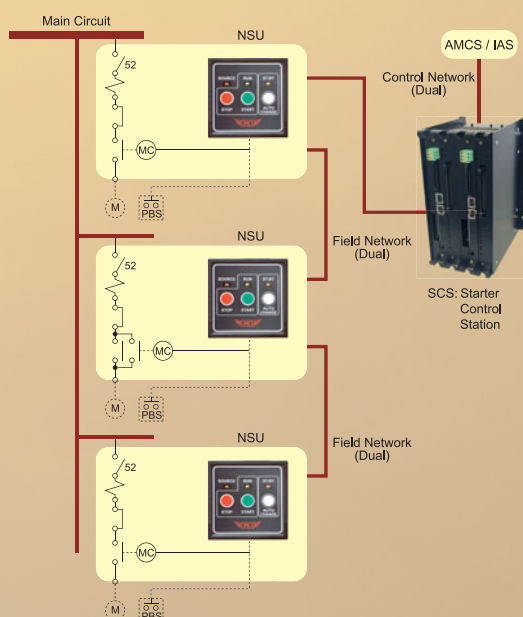
- (1) Changeover of UVP / UVR can be done by using dip switch inside the NSU. (except for NSU-DN2)
- (2) Switchover of dip switch inside the NSU allows users to select and set sequential timer, chattering bypass timer etc., and the number of pressure switches for automatic start / stop.

CLOSE UP 4

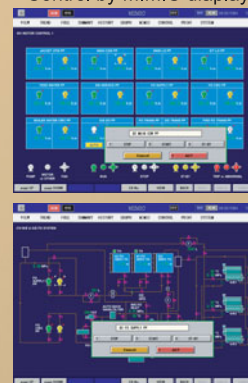
Newly developed Starter Control Station (SCS)

Centralized starter control is provided by network for AMCS (Alarm, Monitoring & Control System) or IAS (Integrated Automation System) through a serial communication network.

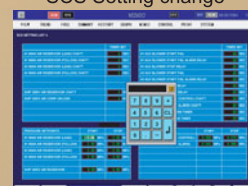
Integrated remote control over widely distributed starters on board is also readily available.



Control by MIMIC display



SCS Setting change



Specification & Ratings	
Rated Voltage	Less than AC 450
Control Voltage	AC110 V (Option: AC220 V) DC24 V
Rated Frequency	60 Hz (Option: 50Hz)
Standard	JEM IEC
Applicable Classification Societies	NK LRS ABS DNV BV
Ambient Temperature	45°C
Type	JGP-21
Short-Circuit Capacity	50KA (AC450V)
Protection Standard	Drip-proof type IP 21/ IP 22 (Option: IP 44)

Standard Dimension & Construction	
Outside dimension	Front panel maintenance type W350 × D450 × H2100mm (1800~2300mm)
	Rear panel maintenance type W300 × D600 × H2100mm (1800~2300mm)
	Front & Rear panels maintenance type W550 × D900 × H2100mm (1800~2300mm)
Door	Front: left hinge (with lock and door stopper) Rear: detachable door (with hook)

Unit dimension				
Motor capacity	Direct startup		Star / delta startup	Compensator startup
	Single speed	Reverse / 2 speed		
3.7KW	300mm	300mm		
15KW	300mm	350mm		
37KW	350mm	700mm	600mm	800mm (width: 600 mm)
45KW	450mm	800mm	750mm	850mm (width: 600 mm)
60KW	550mm	900mm	950mm	900mm (width: 600 mm)
90KW	600mm		950mm	1000mm (width: 600 mm)
120KW	950mm		1200mm	1600mm (width: 600 mm)



JRCS acquired ISO 9001 certification



JAPAN RADIO & ELECTRIC MFG. CO.LTD.

■ Head Office
1-2-14 Higashiyomato-cho, Shimonoseki, Japan 750-8515
Tel: +81 (0)832 61 0200 Fax: +81 (0)832 61 0209

■ Toyoura Plant
2155 Kawatana, Toyoura-cho, Shimonoseki, Yamaguchi, Japan 759-6301
Tel: +81 (0)837 75 1100 Fax: +81 (0)837 75 1105



JRCS CORPORATION

■ Head Office
1-2-14 Higashiyomato-cho, Shimonoseki, Japan 750-8515
Tel: +81 (0)832 61 0303 Fax: +81 (0)832 61 0330
E-mail: jrscs@jrscs.co.jp URL: <http://www.jrscs.co.jp>

■ Overseas Liaison Office
123 Cranbourne Road, Ashton-Under-Lyne, OL6 8QP, England
Tel: +44 (0)161 308 3600 Fax: +44 (0)161 308 3601
E-mail: jrscs.gb@dial.pipex.com