



JRCS Smart Network System

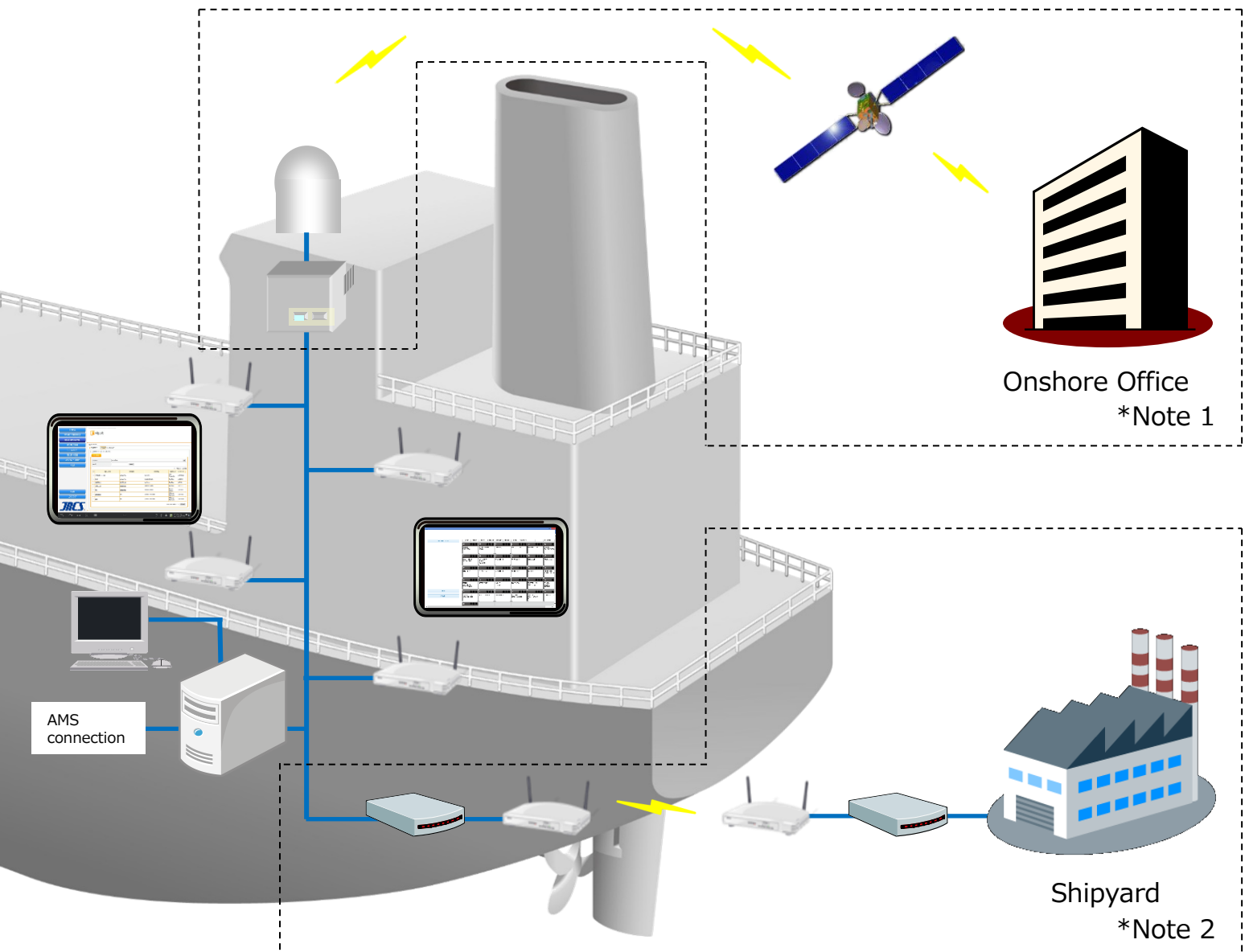
J-S/Net[®]

Alarm & Monitoring System SMS-55 compatible version

"J-S/Net" is patent registered.

System Outline

J-S/Net provides a wireless LAN system and its application for marine use to enable inboard monitoring by utilizing as well as a comprehensive range of utilities.



Note 1: Connection to onshore office (optional)

Note 2: Connection to a shipyard network infrastructure during ship's outfitting (optional)



Feature Description

The information on Alarm & Monitoring System (AMS) SMS-55 can be viewed on the wireless terminal.

LOG IN screen

Mode	Operation Mode	Maintenace Mode	
User ID	<input type="text"/>		
Password	<input type="text"/>		<input type="button" value="Change"/>
	<input type="button" value="End"/>	<input type="button" value="Login"/>	

AMS SMS-55 data can be viewed on a wireless terminal or web browser on the same system network as the J-S/Net server.

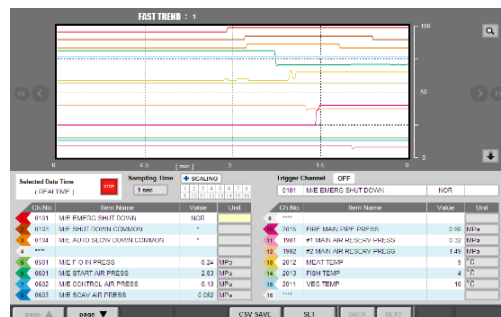
OVERVIEW screen

The AMS SMS-55 screen will be displayed after logging in with your User ID and Web browser.

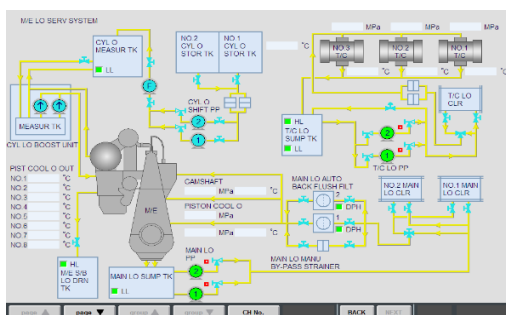
GROUP CALL / CHANNEL CALL screen

Various screens can be viewed using the same operation method as AMS SMS-55.

TREND screen



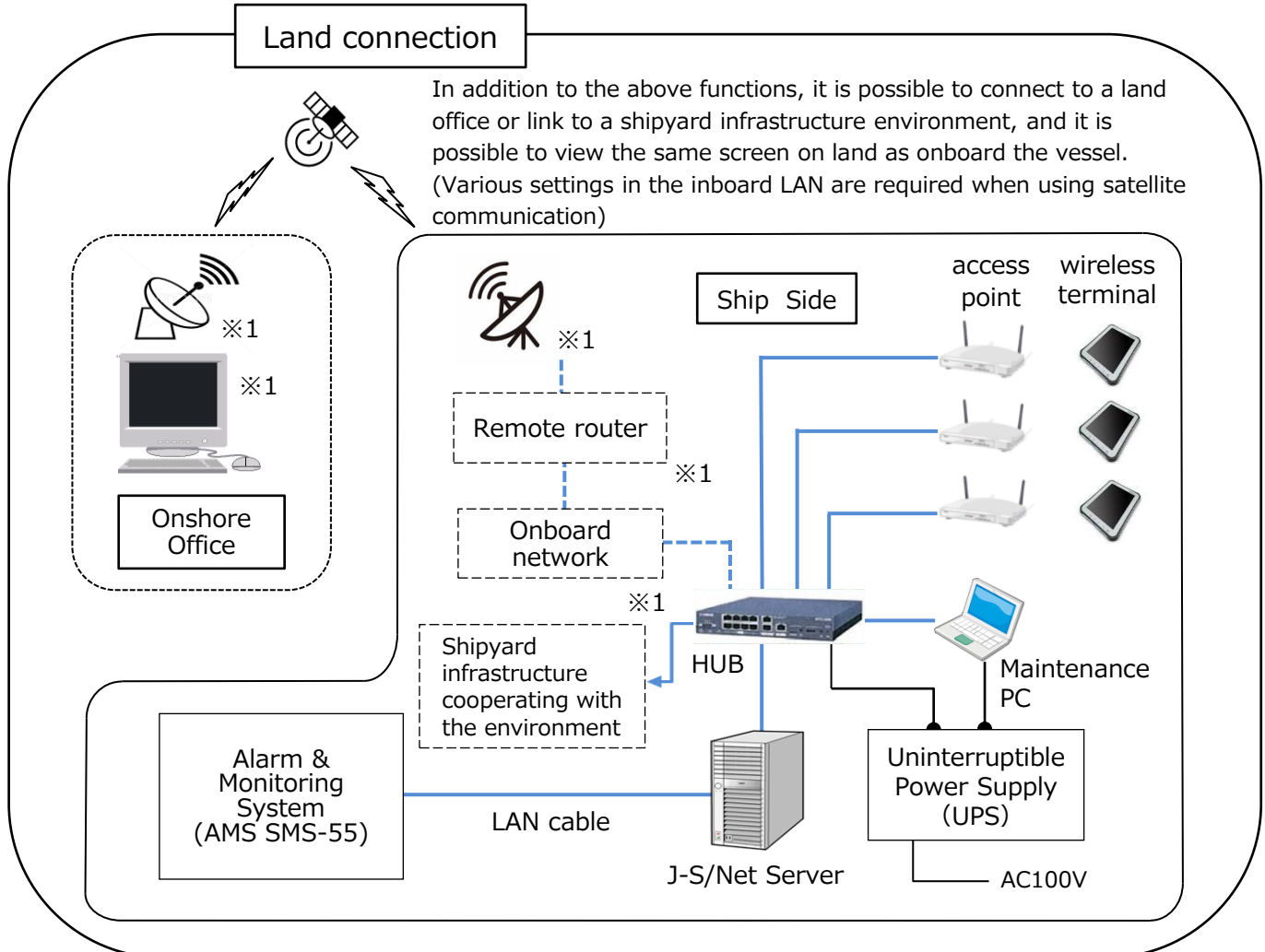
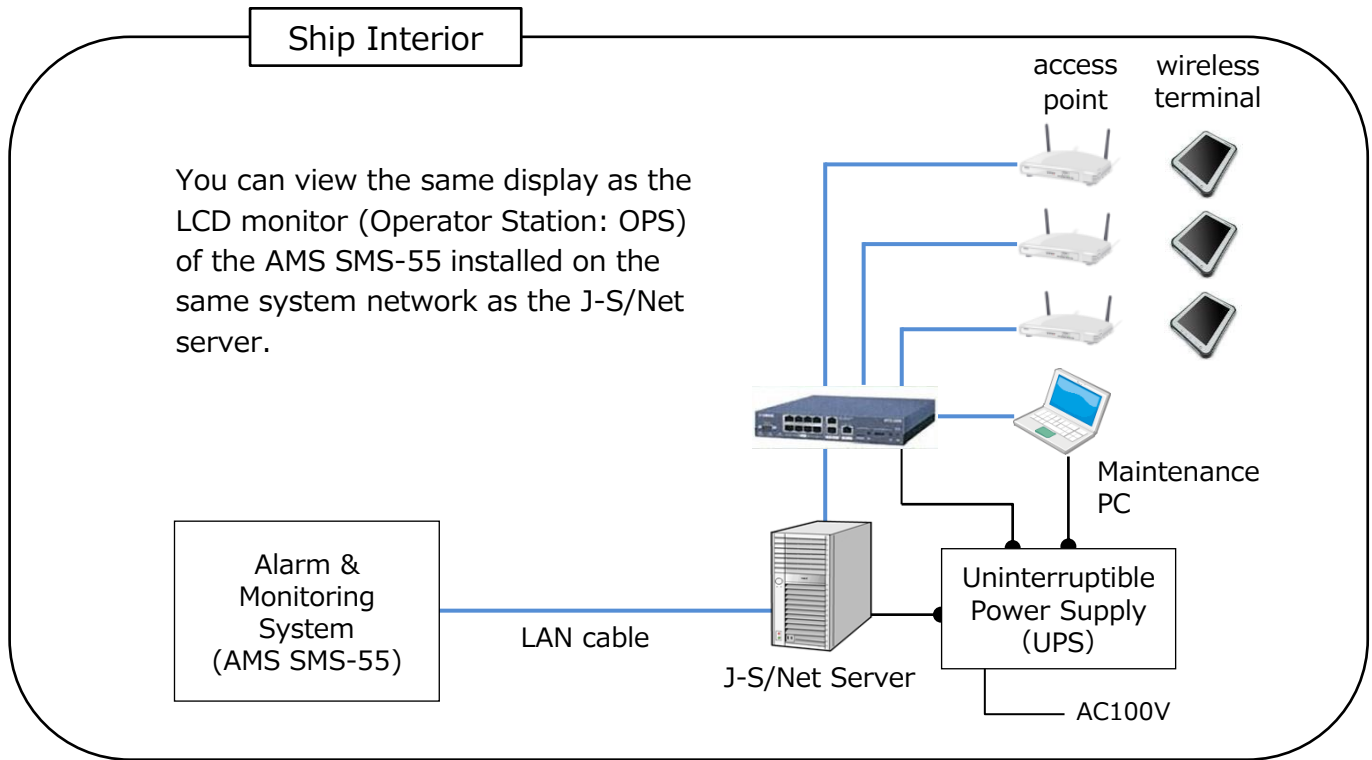
MIMIC screen



* Some AMS SMS-55 functions cannot be used.

System Configuration

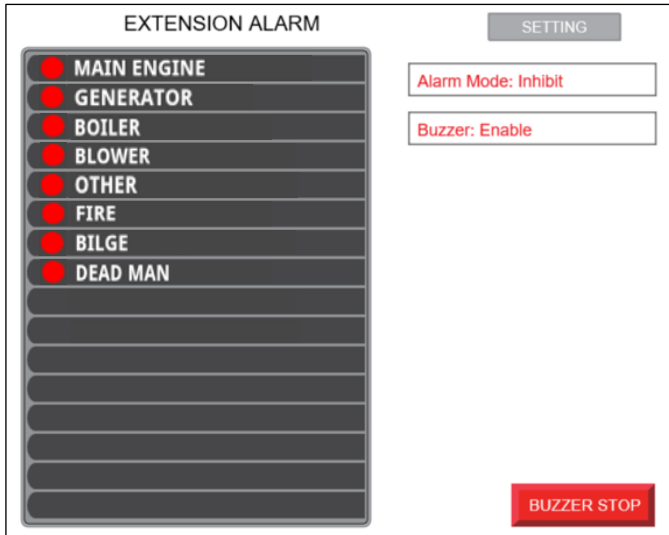
We will provide the optimal system configuration to meet your needs.



Equipment with this *1 mark and the cable between and each device are not in the scope of JRCS.

Optional

We will provide an extension alarm function.



This function simulates an extension alarm panel installed in each cabin and displays it on the terminals.

However, it is not a substitute for the extension alarm panel in the crew cabins required by ship classification. (Can be used in combination)

Caution

Radio law

The radio laws applicable on board depend on ship's country of registration. In the case of overseas use (outside Japan), the radio law of each country should be followed.

If radio waves are leaked outside the ship, it may not comply with the radio laws of each country, so care must be taken.

Wireless LAN

The tablet PCs/mobile phones and onboard personal electronics including a microwave are used in the same wave band. Depending on the usage environment, the radio interference may occur between the said two equipment. The usage condition varies according to the radio wave and network load.

Tablet PCs/mobile phones

JRCS provides the recommended tablet PCs or mobile phones. (In the case that a customer prefers to prepare tablet PCs or mobile phones, a preliminary compatibility test is necessary.)

Caution

Construction work

Installation work differs between in-service vessels and new vessels.
Arrangement/laying of wires and installation of equipment must be requested separately of the shipyard.

In the case that you are considering the introduction of J-S/Net in the future, it is recommended that an Ethernet cable should be laid onboard.

There are cases where other networks (wired or wireless) can not be connected. The alarm monitoring system specified by JRCS needs to be connected.

General Specifications

Type	J-S/Net
Specifications	Alarm & Monitoring System SMS-55 Monitoring
Language	Japanese/English
Maximum mobile numbers	10 sets *1
Connection to onshore office	Optional
Connection to shipyard network infrastructure	Optional
OS (Tablet PC/mobile phone)	Windows, Android, iOS

*1: If you wish to have more than 10 terminals connected, please contact us.

● Screens and specifications are subject to change for improvement.

JRCS JRCS Co. Ltd.

■ JRCS Shimonoseki
(headquarters)

1-2-14 Higashiyamato-machi,
Shimonoseki, Yamaguchi,
750-8515 Japan
TEL: +81 (0)83 261 0200
FAX: +81 (0)83 261 0360

■ JRCS Toyoura

2155 Kawatana, Toyoura-cho,
Shimonoseki, Yamaguchi,
759-6301 Japan
TEL: +81 (0)83 775 1100
FAX: +81 (0)83 775 1105

■ JRCS Tokyo

DLX Building 2F 1-13-1
Nishishinbashi, Minato-ku, Tokyo,
105-0003 Japan
TEL: +81 (0)3 5948 5952
FAX: +81 (0)3 5948 5953