

JACOM-22, already installed in over 1,000 vessels worldwide, has evolved even further.

Introducing the combination of a high-performance Power Management System with JRCS's extensive experience as a system integrator...

JACOM-55 Features

Operability

A 5-inch, full-color LCD display is paired with a user-friendly interface for optimal operability.

A connection to the vessel's master clock allows the system to display logged events using the onboard time.

Data settings, monitoring and trend data can be verified on a PC over an Ethernet connection.

Safety

Generator control and engine protection functions are handled separately by two independent CPUs.

The system operates on a high-speed Ethernet network with redundant communication lines as a standard feature.

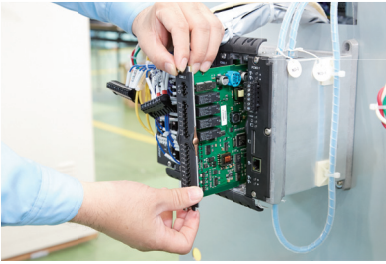
Maintainability

Individually replaceable module-type PCBs make maintenance quick and easy.

Control software can be copied from an SD card.

Revisions to the control specification can be easily adopted thanks to additional I/O modules.

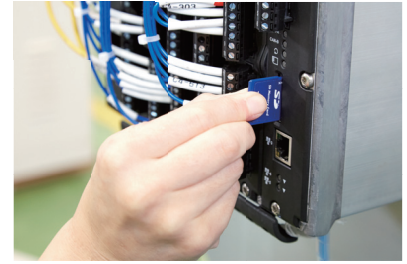
System Features



Circuit boards can be replaced individually in the event of a system malfunction, ensuring quick recovery and minimal running costs



The 5-inch, full-color LCD features a vibrant display which takes advantage of the system's user-friendly design to provide superior operability



Control software updates and CSV data extraction (for viewing on PC) are easy thanks to built-in SD card support

System Architecture

Power Management System

Display Unit

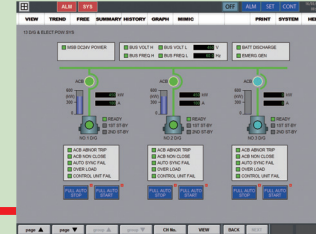


Ethernet

To the Base Units for other generators

Alarm, Monitoring & Control System

Monitor



- Measurement Display
- Generator Control
- System Status
- Alarm/Event Log

Ethernet

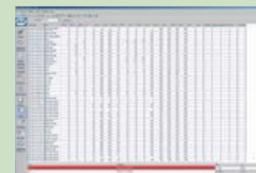
Additional I/O Module

EtherCAT

Base Unit

Utility System

PC



- Alarms
- Trending
- Parameters
- Inputs/Outputs
- Alarm/Event Log

General Specification

Name	Generator control & monitoring system
Power supply	DC 24 V
Power consumption	Max. 11 W
Temperature	0 ~ 50 °C
Applicable classification societies	NK, LRS, ABS, BV, DNV, GL, CCS, KR, JG, RINA

JRCS. JRCS Co. Ltd.

■JRCS Shimonoseki (headquarters):
1-2-14 Higashiyamato-machi, Shimonoseki,
Yamaguchi, 750-8515 Japan
Tel: +81 83 261 0200 Fax: +81 83 261 0360
E-mail: jracs@jracs.co.jp
URL: www.jracs.co.jp

■JRCS Tokyo (headquarters):
CIRCLES Shimbashi 11F, 2-11-13 Nishishimbashi,
Minato-ku, Tokyo, 105-0003 Japan
Tel: +81 3 5948 5952 Fax: +81 3 5948 5953

■JRCS Toyoura:
2155 Kawatana, Toyoura-cho, Shimonoseki,
Yamaguchi, 759-6301 Japan
Tel: +81 83 775 1100 Fax: +81 83 775 1105

■The Netherlands Subsidiary: JRCS Euro Marine Service B.V.
Prof. J.H. Bavincklaan 7, Unit 202, 1183 AT Amstelveen, The Netherlands
Tel: +31 20 2996583

■Singapore Subsidiary: JRCS Engineering Singapore Pte. Ltd.
26 Boon Lay Way #01-82 TradeHub 21, 609970 Singapore
Tel: +65 6515 8286 Fax: +65 6515 9334

■Shanghai Subsidiary: JRCS (Shanghai) Co., Ltd.
Rm #1223, Cimic Tower, #1090 Century Blvd Road, Pudong New Area,
Shanghai, 200120, China
Tel: +86 21 2022 0052 Fax: +86 21 2022 0053