



JRCS Smart Network System

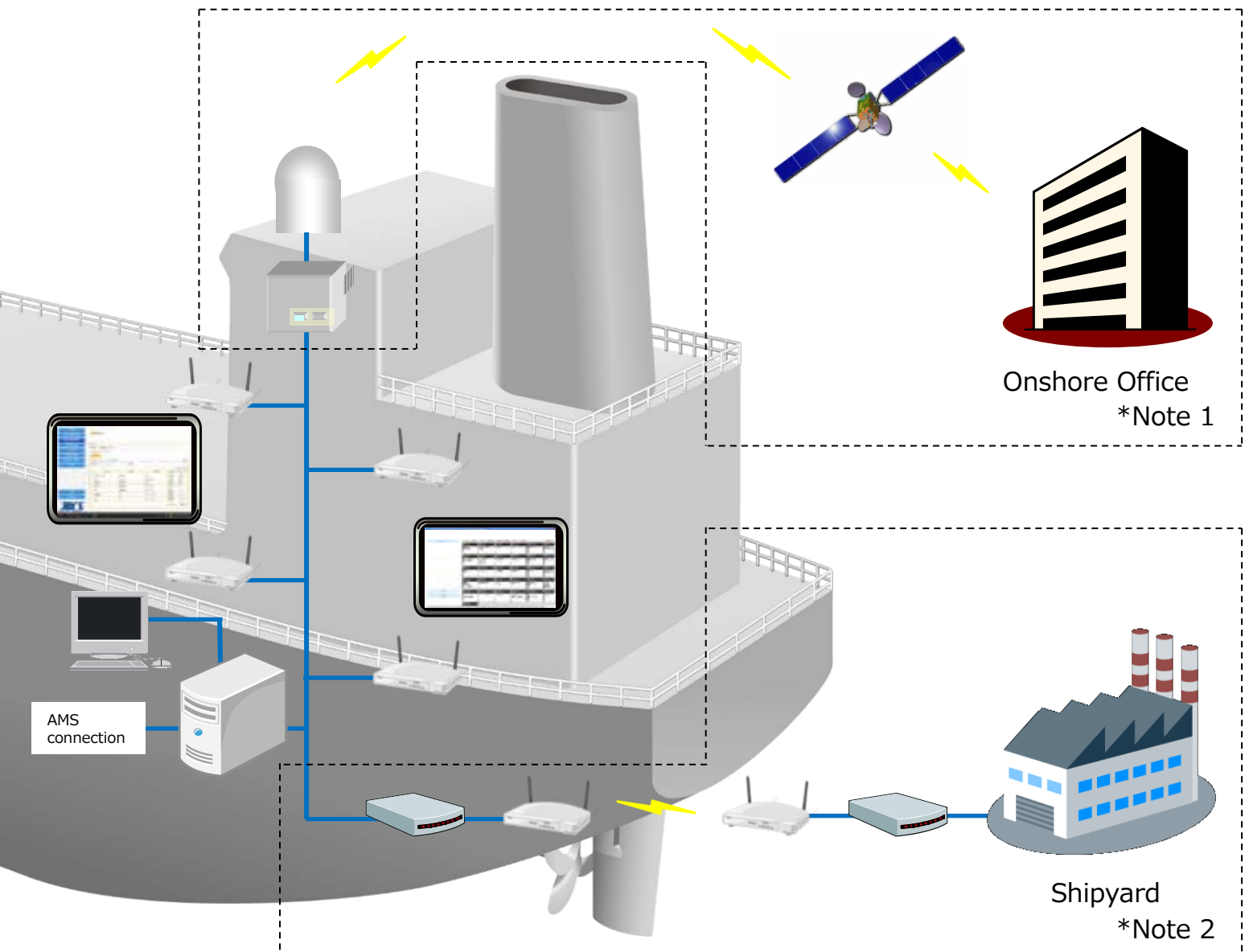
# J-S/Net<sup>®</sup>

Alarm & Monitoring System SMS-55 compatible version

"J-S/Net" is patent registered.

## System Outline

J-S/Net provides a wireless LAN system and its application for marine use to enable inboard monitoring by utilizing as well as a comprehensive range of utilities.



Note 1: Connection to onshore office (optional)

Note 2: Connection to a shipyard network infrastructure during ship's outfitting (optional)

leaf.J-S.net.2024.9E

# Feature Description

OVERVIEW screen



AMS SMS-55 data can be viewed from a wireless terminal using a web browser.

LOG IN screen

Unauthorized access is prevented by requiring the entry of User ID and Password to view data from the terminal.



GROUP CALL / CHANNEL CALL screen



Various screens can be viewed using the same operation method as AMS SMS-55.

TREND screen



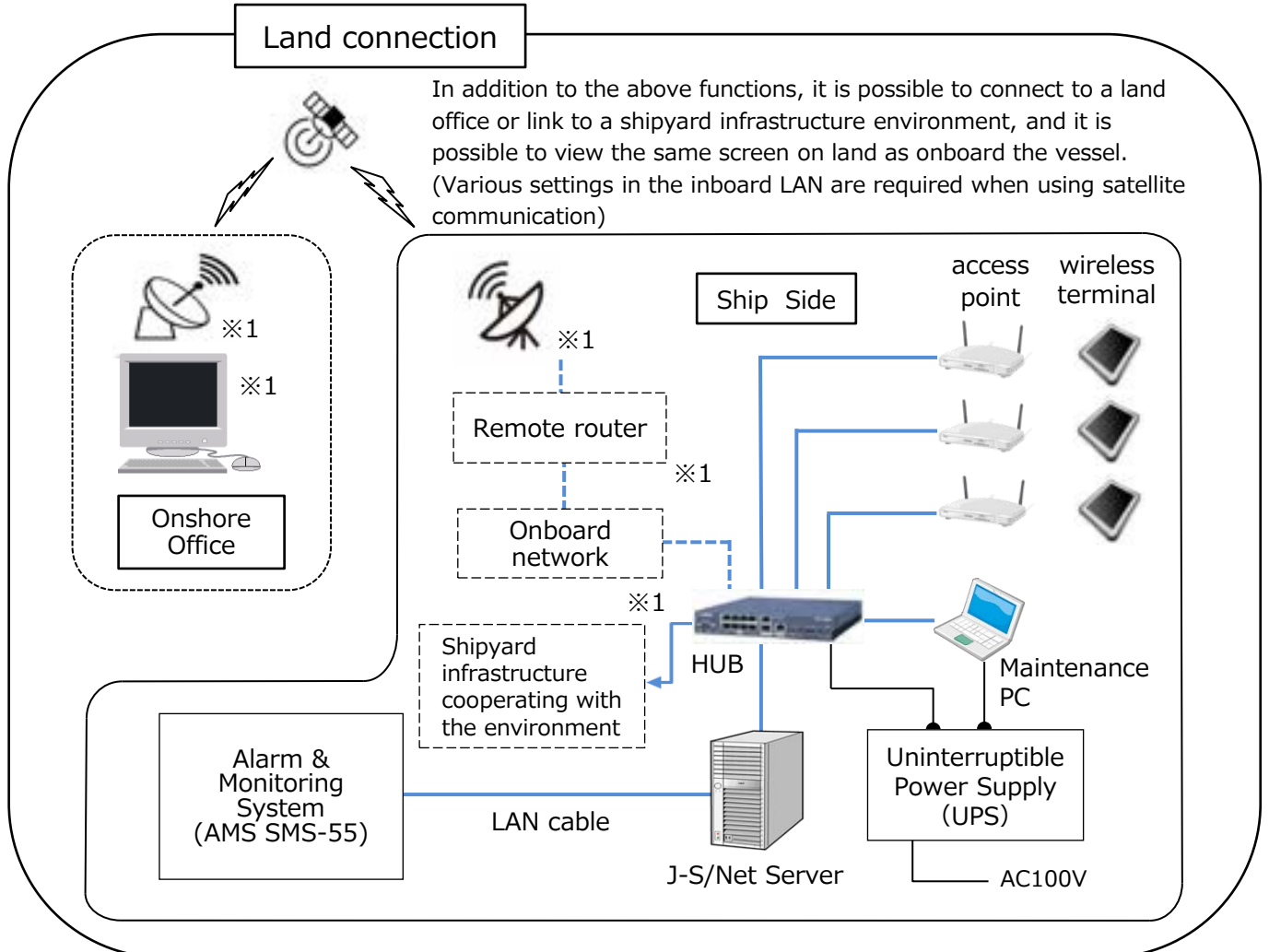
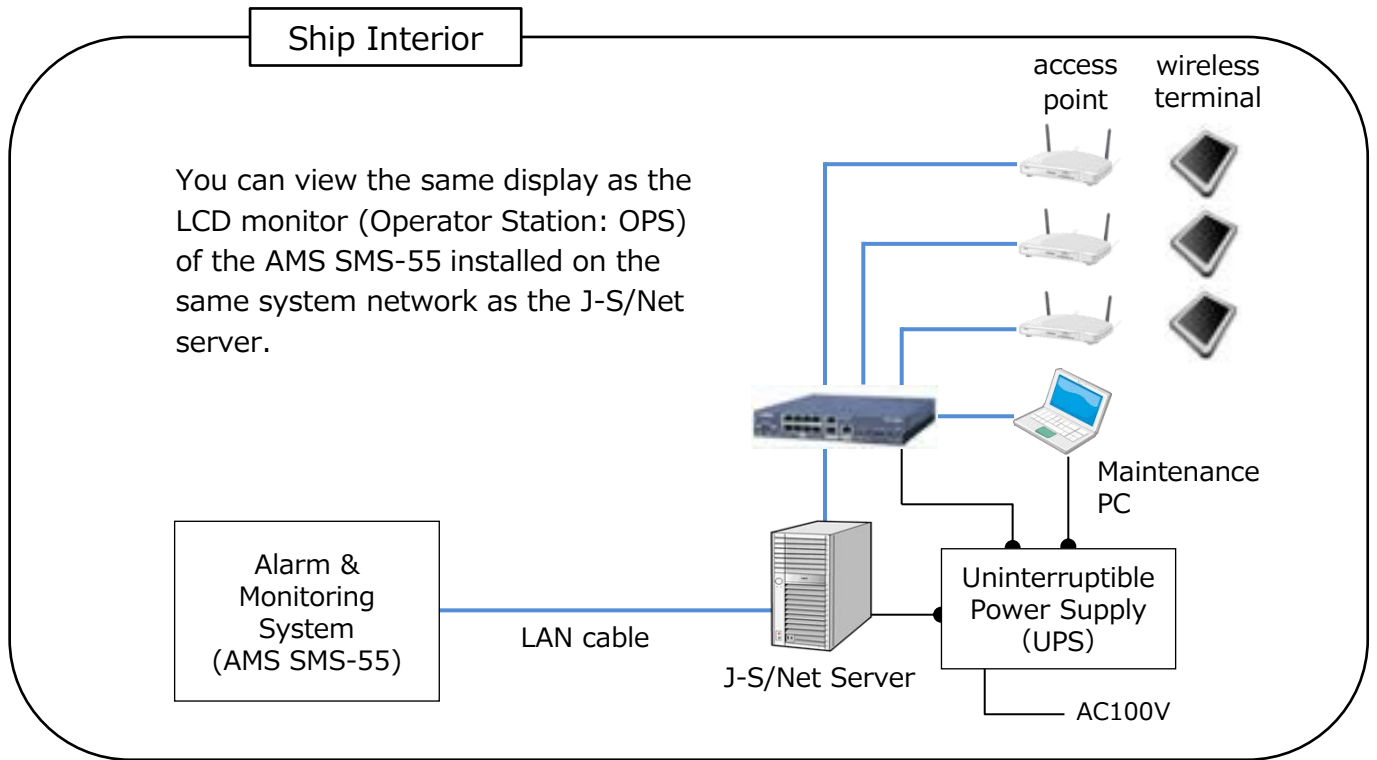
MIMIC screen



- \*The setting values cannot be changed or manipulated.
- \*Some AMS SMS-55 functions are not available.

# System Configuration

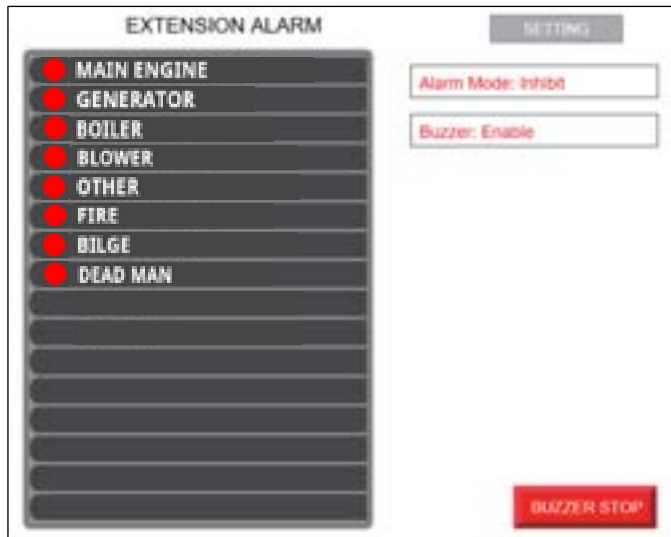
We will provide the optimal system configuration to meet your needs.



Equipment with this \*1 mark and the cable between and each device are not in the scope of JRCS.

## Option

We will provide an extension alarm function.



This function simulates an extension alarm panel installed in each cabin and displays it on the terminals.

However, it is not a substitute for the extension alarm panel in the crew cabins required by ship classification. (Can be used in combination)

## Caution

### Radio law

The radio laws applicable on board depend on ship's country of registration. In the case of overseas use (outside Japan), the radio law of each country should be followed.

If radio waves are leaked outside the ship, it may not comply with the radio laws of each country, so care must be taken.

### Wireless LAN

The tablet PCs/mobile phones and onboard personal electronics including a microwave are used in the same wave band. Depending on the usage environment, the radio interference may occur between the said two equipment. The usage condition varies according to the radio wave and network load.

### Construction work

Installation work differs between in-service vessels and new vessels.

Arrangement/laying of wires and installation of equipment must be requested separately to the shipyard.

In the case that you are considering the introduction of J-S/Net in the future, it is recommended that an Ethernet cable should be laid onboard.

There are cases where other networks (wired or wireless) can not be connected. The alarm monitoring system specified by JRCS needs to be connected.

## General Specifications

Type	J-S/Net
Specifications	Alarm & Monitoring System SMS-55 Monitoring
Language	Japanese/English
Maximum mobile numbers	10 sets *1
Connection to onshore office	Optional
Connection to shipyard network infrastructure	Optional
OS (Tablet PC/mobile phone)	Windows, Android *2

\*1: If you wish to have more than 10 terminals connected, please contact us.

\*2: If you wish to use an OS other than the standard, please consult with us in advance. If the customer provides his/her own terminal, it is necessary to set up a connection with the server.



■ JRCS Shimonoseki  
(headquarters)

1-2-14 Higashiyamato-machi,  
Shimonoseki, Yamaguchi,  
750-8515 Japan  
TEL: +81 (0)83 261 0200  
FAX: +81 (0)83 261 0360

■ JRCS Toyoura

2155 Kawatana, Toyoura-cho,  
Shimonoseki, Yamaguchi,  
759-6301 Japan  
TEL: +81 (0)83 775 1100  
FAX: +81 (0)83 775 1105

■ JRCS Tokyo  
(headquarters)

CIRCLES Shimbashi 11F, 2-11-13  
Nishishimbashi, Minato-ku, Tokyo,  
105-0003 Japan  
TEL: +81 (0)3 5948 5952  
FAX: +81 (0)3 5948 5953